

Public Service Announcement:

08/29/2022

Contact:
Ryan Thilges, P.E.
Public Works Director/Engineer
Blue Earth County
(507) 304-4025

County Road 12 Road Closure Update

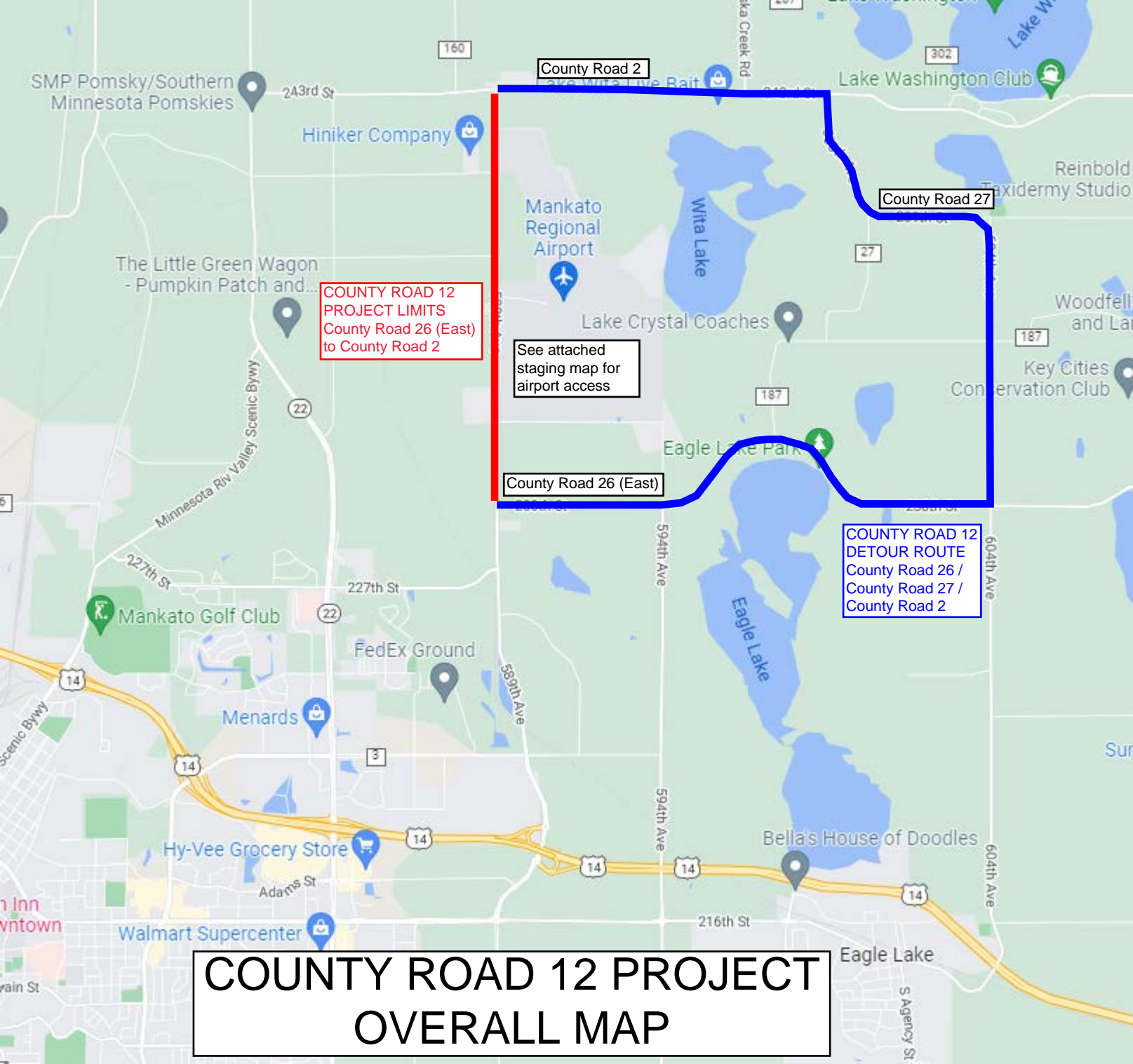
Phase 1 of the County Road 12 project, from Airport Drive to County Road 2, will re-open on Wednesday, August 31, 2022. At the same time, Phase 2 of the project, south of Airport Drive to County Road 26 East, will close to traffic. Access to the airport will switch to the north using Phase 1 from County Road 2 and Airport Drive into the airport.

Thru-traffic on County Road 12 will continue to be detoured via County Road 26 (East), County Road 27 and County Road 2 for the remainder of the project. Drivers should expect County Road 12 to be closed to thru-traffic until mid-October.

Residents and landowners are encouraged to contact the Blue Earth County Public Works Department to coordinate access concerns with the County and the Contractor, Minnesota Paving & Materials. Maps outlining the project area and detour routes are included with this public service announcement.

For more information on the County Road 12 project please contact the Blue Earth County Highway Department at (507) 304-4025.

-End-



COUNTY ROAD 12
PROJECT LIMITS
County Road 26 (East)
to County Road 2

See attached
staging map for
airport access

County Road 26 (East)

COUNTY ROAD 12
DETOUR ROUTE
County Road 26 /
County Road 27 /
County Road 2

COUNTY ROAD 12 PROJECT OVERALL MAP

160

County Road 2

243rd St

Lake Wita

Hiniker Company

Airport Access during PHASE 2 Closure

Airport Drive

Mankato Regional Airport

Runway

PHASE 2 CLOSURE August 31 to mid-October

COUNTY ROAD 12 PROJECT STAGING MAP

County Road 26 (East)

230th St

230th St

589th Ave

594th Ave

