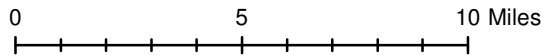
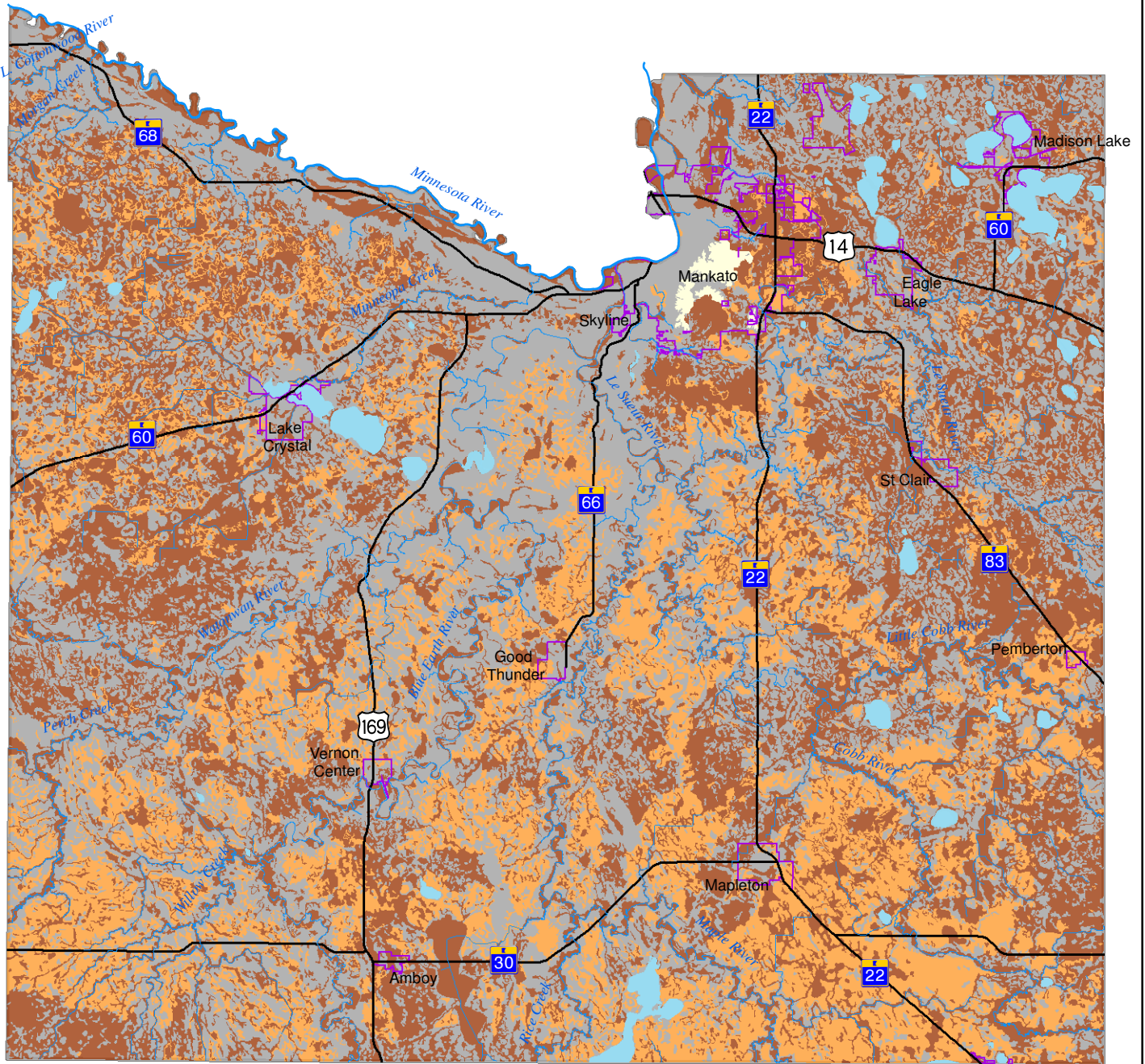










# Hydric Soils Rating



## Hydric Rating

- |  |  |
|--|--|
|  Hydric (100%)                                  |  Lake                   |
|  Predominantly Hydric (66 to 99%)               |  Stream, River or Ditch |
|  Partially hydric (33 to 65%)                   |  State or U.S. Highway  |
|  Predominatly nonhydric or nonhydric (0 to 32%) |  City                   |

Prepared By: Blue Earth County  
Environmental Services  
2015

Source: NRCS SSURGO Soils