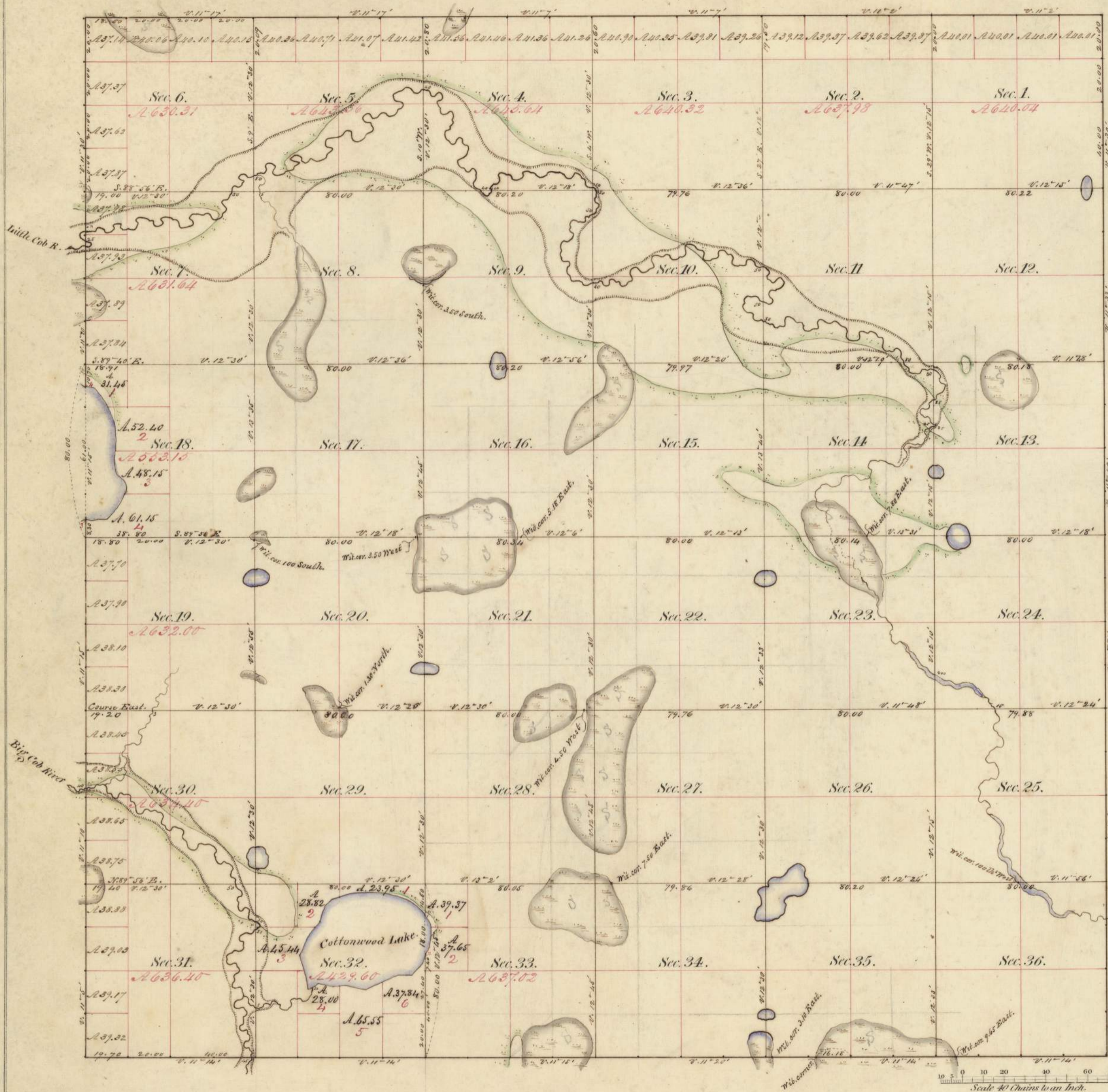


Township N^o 106 N: Range N^o 25 West, 5th Mer.



Meanders of Lakes.								
Posts	Courses	Ch. ^s Lk. ^s	Posts	Courses	Ch. ^s Lk. ^s	Posts	Courses	Ch. ^s Lk. ^s
Lake in sections 32 & 33								
1	S. 27° E.	3.50						
	S. 8° E.	5.00						
	S. 8° W.	5.00						
	S. 20° W.	3.00						
2	S. 27½° W.	1.97						
	S. 22° W.	5.00						
	S. 44° W.	6.00						
	W. 12° E.	6.50						
	S. 66° W.	17.00						
	N. 78° W.	8.00						
	S. 85° W.	7.00						
	N. 78° W.	7.00						
	S. 27° W.	2.00						
	S. 67½° W.	4.00						
	N. 15° W.	6.50						
	N. 17° W.	10.00						
	N. 26° E.	8.50						
	N. 39° E.	10.00						
	N. 22° E.	7.50						
	N. 52° E.	5.00						
	N. 72° E.	8.00						
	N. 85° E.	8.00						
	S. 86° E.	10.00						
	S. 72° E.	10.00						
	S. 54° E.	8.00						
1	S. 35½° E.	2.76						
Lake in Section 18								
3	S. 76° E.	2.50						
	N. 82° E.	3.50						
	East	3.00						
	N. 45° E.	8.50						
	N. 29° E.	6.50						
	N. 10° E.	3.50						
	N. 24° W.	3.00						
	N. 52° W.	4.00						
	N. 22° W.	4.50						
	N. 95° W.	1.00						
	N. 8° E.	3.50						
	N. 14° E.	2.00						
	N. 7° E.	4.00						
	N. 3° E.	3.00						
	N. 5° W.	5.00						
	N. 22½° W.	10.00						
	N. 30° W.	5.00						
	N. 41° W.	4.50						
4	N. 85° W.	4.00						
Total Miles the Lk.								
Total		3.	16.	23				

Total number of Acres 22,712.06

Surveys Designated.	By Whom Surveyed	Date of Contract.	Amount of Surveys M. Ch. ^s Lk. ^s	When Surveyed.	When Changed in the Sur. Gen. ^l Ac ^t
Township lines.	John Ball	June 20 th 1854	17 1/2 78.20	July & Aug. 1854	
	E. L. Norris	June 2 nd 1853	6 1/2 00.47	October 1853	
Subdivisions.	John C. Everett	Sept 26 th 1854	6 2 75.29	October 1854	

The above Map of Township N^o 106 North, of Range N^o 25 West, of the 5th Principal Meridian Minnesota is strictly conformable to the field notes of the survey thereof on file in this Office which have been examined and approved.

Surveyor General's Office
 Dubuque, April 10th 1855

Warner Lewis
 Sur. Gen.