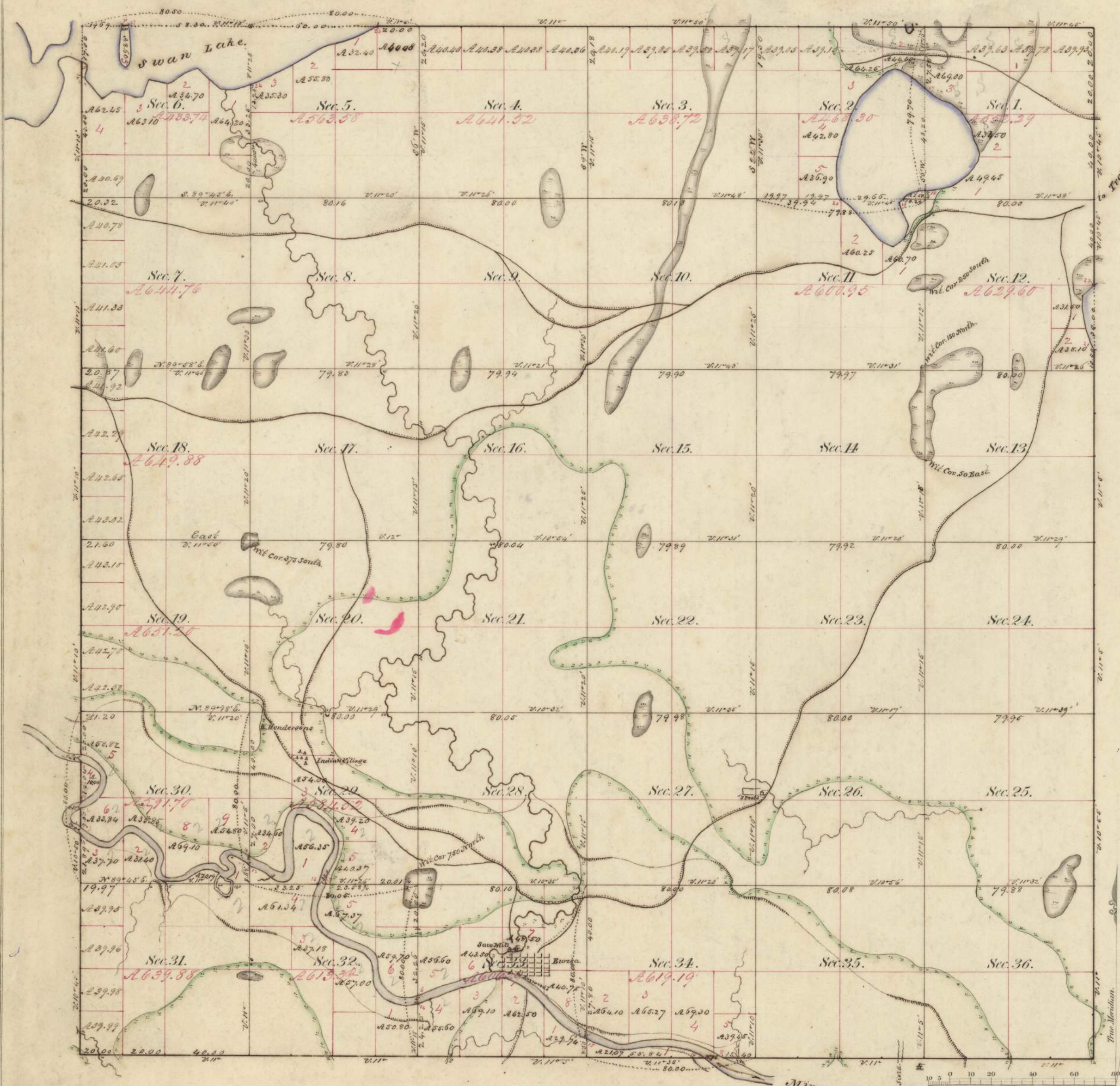


Township N^o 100 N. Range N^o 28 West, 5th Mer.



Meaders of Minnesota River & Lakes.									
Posts	Courses	Ch. Lk.	Posts	Courses	Ch. Lk.	Posts	Courses	Ch. Lk.	
Minnesota River			425 th	5.50	A52 th	2.23			
Left bank downstream			477 th	4.60	A64 th	2.80			
			430 th	4.30	A34 th	10.96			
1	471 th	3.00	447 th	3.75	A32 th	2.50			
			460 th	7.75	A22 th	2.95			
			438 th	3.60	A44 th	3.94			
			428 th	3.00	A24 th	4.50			
			427 th	4.90	A28 th	1.80			
			447 th	4.70	A34 th	5.65			
			454 th	4.75	A18 th	3.05			
2	474 th	4.00	412 th	4.50	A24 th	7.20			
			419 th	5.75	A39 th	1.85			
			443 th	3.50	A39 th	3.60			
			461 th	4.00	A22 th	3.05			
			475 th	2.00	A38 th	1.25			
			454 th	1.80	A37 th	2.40			
			440 th	7.00	A71 th	5.75			
			465 th	2.10	A13 th	2.45			
			454 th	4.50	A39 th	6.05			
			458 th	6.50	A2 th	1.10			
			457 th	2.20	A67 th	2.60			
			445 th	4.00	A72 th	3.35			
			430 th	2.50	A73 th	3.25			
			423 th	4.25	A77 th	6.00			
			427 th	4.00	A86 th	7.55			
			426 th	3.40	A23 th	5.70			
			416 th	1.70	A64 th	4.60			
			423 th	2.50	A54 th	5.50			
			426 th	6.75	A47 th	1.20			
			460 th	4.75	A42 th	2.75			
			447 th	2.50	A24 th	3.55			
			451 th	3.00	A49 th	5.00			
			452 th	5.00	A33 th	4.00			
			454 th	4.00	A26 th	6.35			
			459 th	5.80	A21 th	3.75			
			453 th	1.00	A23 th	4.20			
			437 th	1.00	A22 th	1.75			
			447 th	3.10	A2 th	4.25			
			422 th	2.75	A2 th	3.25			
			426 th	2.40	A4 th	3.50			
			469 th	3.40	A36 th	3.50			
			471 th	3.50	A31 th	2.50			
			426 th	4.15	A31 th	7.50			
4	465 th	2.81	436 th	1.80	A31 th	4.75			
			461 th	3.85	A31 th	4.00			
			453 th	4.25	A66 th	8.70			
			475 th	3.60	A71 th	3.41			
			463 th	2.10	A23 th	7.65			
			431 th	2.20	A19 th	7.65			
			410 th	2.70	A12 th	4.10			
			403 th	15.00	A24 th	4.50			
			410 th	3.40	A36 th	3.55			
			426 th	5.50	A55 th	4.95			
			455 th	3.80	A2 th	3.40			
			457 th	3.50	A37 th	9.90			
			466 th	5.30	A44 th	3.35			
			433 th	6.30	A48 th	4.50			
			450 th	4.80	A70 th	2.64			
			423 th	7.30	A23 th	2.64			
			424 th	5.00	A2 th	3.10			
			424 th	7.30	A55 th	3.15			
			425 th	3.70	A68 th	2.00			
			415 th	4.50	A72 th	5.25			
5	421 th	0.77	437 th	5.05	A38 th	6.40			
			423 th	2.50	A74 th	3.75			
			423 th	6.00	A42 th	4.60			

Total number of Acres 22250.26

Surveys Designated.	By Whom Surveyed	Date of Contract.	Amount of Surveys M. Ch. Lk.	When Surveyed.	When Changed in the Sw. Gen. Acc.
Township lines.	John Ball	Sept. 12 th 1854	18. 00. 50	September 1854	
"	John Ball	June 20 th 1854	6. 00. 00	Sept. 1854	
Subdivisions.	Mr. W. Hayward	Sept. 25 th 1854	77. 02. 69	Sept. & Oct. 1854	

The above Map of Township N^o 100 North, of Range N^o 28 West, of the 5th Principal Meridian Minnesota, is strictly conformable to the field notes of the survey thereof on file in this Office which have been examined and approved.

Surveyor General's Office
 Dubuque, March 23rd 1855

Wm. Lewis
 Sur. Gen.